

Dulux[®]

POWDER
COATINGS



FLUOROSSET[®] X25

ULTRA DURABLE ARCHITECTURAL ALUMINIUM POWDER COATING



Worth doing, worth Dulux[®].



FLUOROSSET® X25

Fluoroset® X25 is a 100% PVF3 fluoropolymer system and stands alone for proven performance in the field. First launched in 1991, Dulux® offers Fluoroset® X25 in six stock colours.

Fluoroset® X25 is suitable for:

- Monumental / landmark projects where product performance is under constant review,
- All prestigious commercial and residential projects, irrespective of height,
- When class leading colour and gloss retention is required,
- Developments greater than 10 metres from salt water,
- Achievement of AAMA 2605-05 performance,
- Where a 25 year colour warranty and 25 year film integrity warranty is required.

Cost versus Value

The final price of powder coated aluminium is influenced by many factors, including the design of the aluminium section, the type of gloss, the hardware, and to a much lesser extent, the powder coat finish.

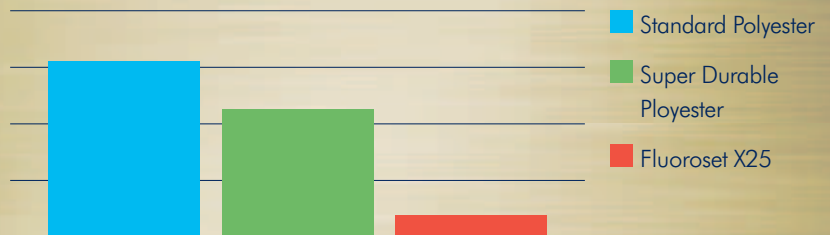
Whilst finishing is generally the last process in the production of an architectural section, it is commonly one of the first review points for cost cutting.

The initial price premium which is to be expected when specifying high performance grade powder coating, will be offset by the quality of finish during the product service life. This can influence maintenance and repair costs for the future.



25 Year Life Cycle Cost

Fluoraset X25® v Standard & Super Durable Polyester



*Life Cycle Cost assumes on-site refurbishment of the coated item at the end of the product warranty duration.
*Actual costs will vary according to the location and method of refurbishment.



Green Star® Rating

Independent chamber testing carried out by Foray Laboratories confirms Dulux® Fluoraset® X25 contributes towards satisfying credit IEQ-11 in the Green Star® Office Interiors, Rating Tool.

“Total Volatile Organic Compound Emission Rate: <math><0.01 \text{ mg/m}^2 \text{ /hr}</math> (7 days)”

When Fluoraset X25® is used in the typical manner in an office building the resulting airborne total volatile organic compound concentration can be expected to be less than 0.5mg/m^3 as specified by Green Building Council of Australia Green Star® Office Interiors IEQ-11”

Products are not reviewed or certified under the Green Star® rating system. Green Star® credit requirements cover the performance of materials in aggregate, not the performance of individual products or brands. For more information on Green Star®, visit www.gbca.org.au

Registered Applicators

Only Dulux® Registered Aluminium Applicators can purchase and apply Fluoraset® X25. Dulux® Registered Aluminium Applicators are issued with a 25 year colour and film integrity warranty, after demonstrating their capability to meet stringent quality conditions and international standards.

The importance of selecting an appropriate applicator cannot be understated. For a surface coating to provide maximum performance, the metal to be coated must be properly cleaned and prepared, the powder coating must be applied in accordance with Dulux®’s recommendation, and the coated metal thoroughly tested for quality assurance before being released for fabrication.

Each Dulux® Registered Aluminium Applicator has invested heavily in their business to guarantee their performance in preparing the premium finishes shown in this guide. Should you require details relating to Dulux® Registered Aluminium Applicators please contact your local Dulux® representative or visit the web at www.duluxpowders.com.au

Project Type, Environment & Specification

Specifying powder coatings that comply with an appropriate internationally recognized performance standard removes all doubt for the building owner, builder, fabricator and applicator. Standards spell out the level of colour performance and film properties required for a particular environment.

PROJECT TYPE	ENVIRONMENT	STANDARD	DULUX® POWDER COATING
Prestigious Monumental Developments, irrespective of height.	Mild, Tropical or Severe	AAMA 2605-05	Fluorose [®] X25
High Rise Commercial & Residential Developments, irrespective of height	Mild, Tropical or Severe	AAMA 2605-05	Fluorose [®] X25

FLUOROSET [®] X25		STOCK RANGE			
Product Code	Colour Name	LRV	R	G	B
9641157M	Xtreme™ White Satin	85	237	238	233
9647289S	Xtreme™ Coin Satin	44	173	178	180
9647302Q	Xtreme™ Champagne Satin	40	172	170	166
9647273Q	Xtreme™ Silver Satin	37	161	164	166
9647297M	Xtreme™ Charcoal Satin	7	74	76	79
96456970	Xtreme™ Black Satin	4	53	55	57



Fluorose[®] X25 is available in a range of standard stock colours chosen to compliment most architectural features. In addition, project specific colours may be matched on a made to order basis. Some limitations do apply such as batch size, colour choice and technology. For more information please contact **Customer Service on 13 24 99**.

How to Specify Fluorose[®] X25

To ensure there is no misinterpretation of what you want on your project the following information should be included in your specification.

- Specify the Dulux[®] "Product Name & Code" to meet,
- The AAMA standard required "AAMA 2605-05",
- To be applied by a Dulux[®] Registered Aluminium Applicator in accordance with AS3715-2005,
- Specify both the colour retention AND film integrity warranty period.

For example: "Fluorose[®] X25" Xtreme™ Silver 9647273Q-20kgs to meet AAMA 2605-05. Product must be applied by a Dulux[®] Registered Aluminium Applicator and must offer a 25 year colour and 25 year film integrity warranty."

Worth doing, worth Dulux[®].

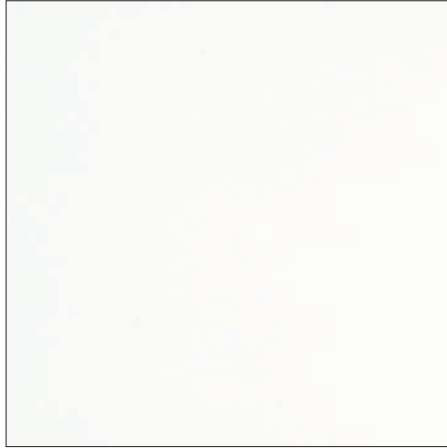


Dulux®

POWDER COATINGS



FLUOROSSET® X25



Xtreme™ White
Fluoroset® X25

Satin
9641157M



Xtreme™ Coin
Fluoroset® X25

Satin
9647289S



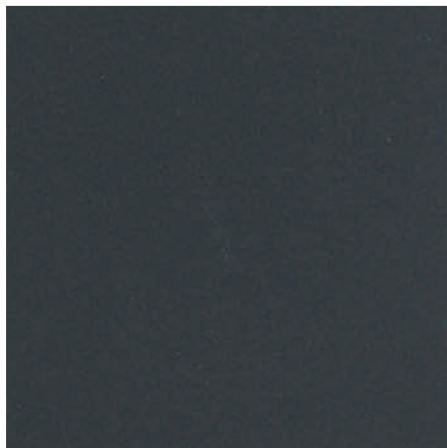
Xtreme™ Champagne
Fluoroset® X25

Satin
9647302Q



Xtreme™ Silver
Fluoroset® X25

Satin
9647273Q



Xtreme™ Charcoal
Fluoroset® X25

Satin
9647297M



Xtreme™ Black
Fluoroset® X25

Satin
96456970

Colours represented in this brochure are indicative only. They are as close to the actual product colours as modern printing techniques allow and have been matched to outdoor viewing. Colour appearance may vary according to light source.

Dulux®

POWDER COATINGS

AUSTRALIA

Phone 13 24 99

Fax 1800 804 649

www.duluxpowders.com.au

Fluoraset®, CustomColour®, Dulux®, and Worth doing, worth Dulux® are trade marks of DuluxGroup (Australia) Pty Ltd.

Any advice, recommendation, information, assistance or service provided by DuluxGroup (Australia) Pty Ltd in relation to goods manufactured by it or their use and application is given in good faith and is believed by DuluxGroup (Australia) Pty Ltd to be appropriate and reliable.

However, any advice, recommendation, information, assistance or service provided by DuluxGroup (Australia) Pty Ltd is provided without liability or responsibility PROVIDED THAT the foregoing shall not exclude, limit, restrict or modify the rights entitlements and remedies conferred upon any reason, or liabilities imposed by DuluxGroup (Australia) Pty Ltd any condition or warranty imposed by a Commonwealth, State or Territory Act or ordinance rendering void or prohibiting such exclusion, limitation, restriction or modification.

The images shown in this brochure are examples of where Dulux Powder Coatings can and have been used.

The information on this brochure is correct at the time of print.

©Copyright 2011 DuluxGroup (Australia) Pty Ltd



Worth doing, worth Dulux®.